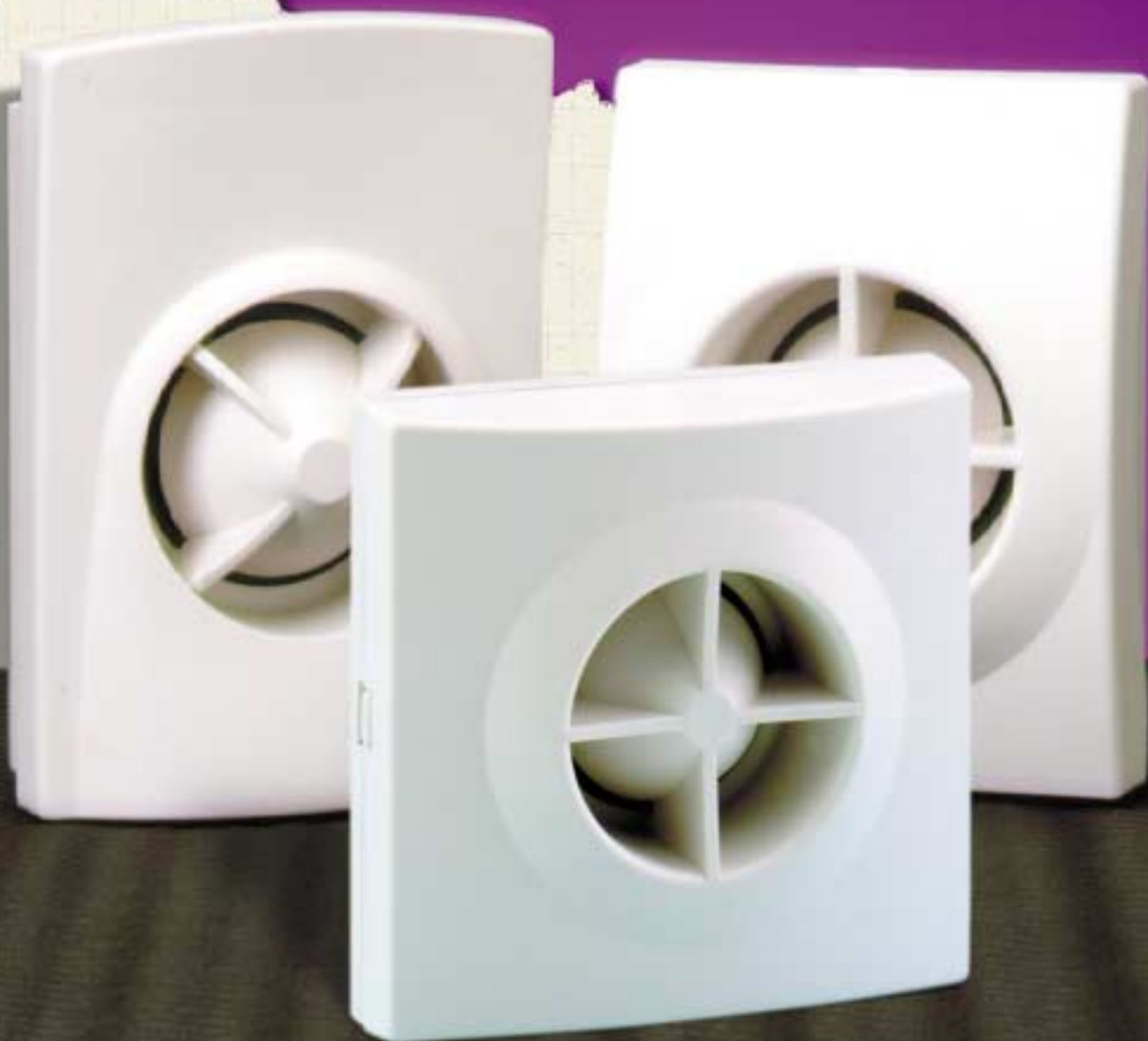


**ASC**  
ADEMCO SENSOR COMPANY

An ADEMCO Group Company

# Wave Series

Indoor Electronic Sirens and Speakers



*Attractive design, powerful performance and installation ease. When it comes to electronic sirens and speakers, the miniature Wave Series is your best choice.*

**ADEMCO**  
GROUP

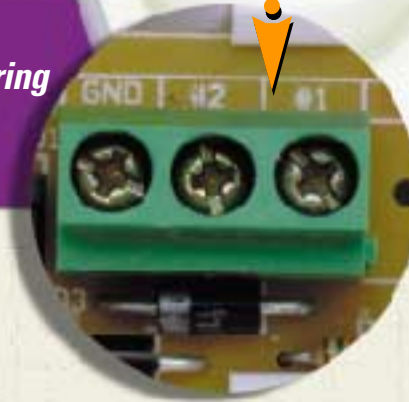
# Wave Series

## MOUNT ON

- Wall
- Corner
- Ceiling
- Single gang wall plate

The Wave's unique snap-open **HINGED CASE DESIGN**-an industry first for sounders- allows for installation without disassembly.

**TERMINAL STRIP**—no soldering or splicing required.



ASC's Wave Series is the industry's first to offer corner mounting capability as pictured. These sounders may be **CORNER MOUNTED** without the support of brackets, shelves or additional hardware. The Wave Series is designed to fit a standard single gang wall plate as well.



Wave 4

# Indoor Electronic Sirens and Speakers

Mounted **VERTICALLY** or **HORIZONTALLY**, the Wave 2 siren and Wave speaker offers optimum installation versatility.



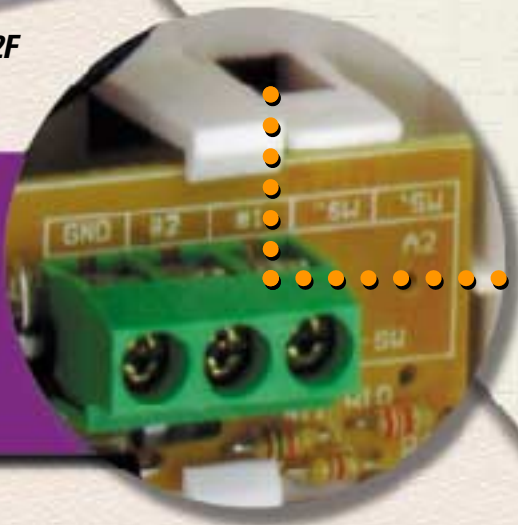
Wave 2



Wave 2F

The Wave-F speaker and Wave 2F siren can be **RECESSED** in a standard double gang electrical box, and also features the Wave snap-open hinged case design.

**CHANNELED BACK** makes surface or concealed wiring neat and convenient.



case back



An ADEMCO Group Company

# Wave Series

Indoor Electronic Sirens and Speakers

## The ASC Edge:

- ◆ Attractive patent pending designs fit single gang wall plate
- ◆ Snap-open hinged case cover for faster installation
- ◆ Terminal strip eliminates soldering and splicing
- ◆ Corner or ceiling mounting with no additional brackets or hardware
- ◆ Channeled case back for convenient wiring access
- ◆ Vertical or horizontal mounting (Wave 2, Wave) for great versatility
- ◆ Louder (106db) dual tone siren output

### Wave2/Wave4

#### Siren Specifications:

**Housing:** ABS 94 V0 Plastic, with hinged case cover  
**Dimensions:** Wave 2 - 3.25"W x 4.25"H x 2.0"D (82.5mm W x 108mm H x 51mm D)  
 Wave 2F - 4.4"W x 4.4"H x .750"D (112mm W x 112mm H x 19mm D) (Flush Mount)  
 Wave 4 - 3.25"W x 4.50"H x 2.0"D (82.5mm W x 114mm H x 51mm D)  
**Color:** White  
**Operating Temperature:** 20 deg.F to 175 deg.F  
**Operating Voltage:** 6V - 14 VDC  
**Current Draw:** 500mA Max. @ 12 VDC  
**Sound Pressure:** Steady: 106db @ 12 VDC, 1 meter  
 Warble: 106db @ 12 VDC, 1 meter  
**Connection:** 3 position Terminal Block (Wave 2, Wave 2F and Wave 4)  
 2 position Terminal Block (Wave Speaker)  
**Agency Listing:** (Pending) UL1023, 985, and 464.

### Wave/Wave-F

#### Speaker Specifications:

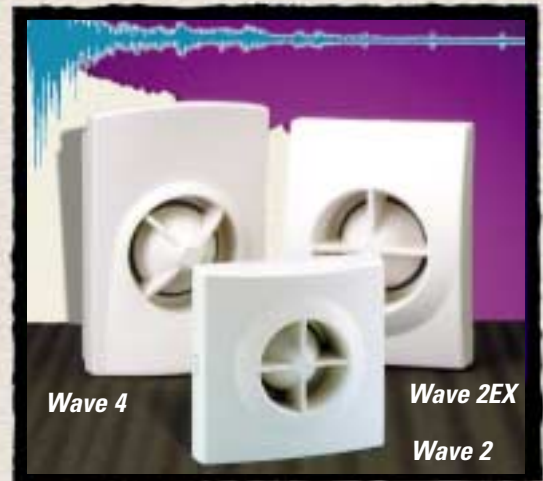
**Impedance:** 8 ohms, 15W peak  
**NOTE:** Housing dimensions and other specifications are identical to Wave 2 and Wave 2F two-tone sirens.

#### How To Order:

**Wave:** 8 ohms/15 watt speaker  
**Wave-F:** Flush mount. 8 ohms/15 watt speaker  
**Wave2:** Two-tone siren  
**Wave2F:** Flush mount two-tone siren  
**Wave4:** Two-tone siren



**Wave 2 corner mounts both horizontally and vertically.**



**Same powerful performance.  
 Same installation ease.  
 You choose the style...  
 Wave 4, Wave 2 or Wave 2EX.**



1230 S. Hurstbourne Pkwy., Suite 100, Louisville, KY 40222  
 L/WAVEv2/D



Copyright ©1999 Pittway Corporation