

TOTAL CONNECT 2.0 INTEGRATION WITH CHAMBERLAIN

OVERVIEW

This document details the steps needed to perform the integration for Total Connect 2.0 with Chamberlain and LiftMaster Garage door devices that are compatible with MyQ.

TABLE OF CONTENTS

OVERVIEW	1
TABLE OF CONTENTS	1
PREREQUISITES	1
SETUP NEW OR EXISITNG GARAGE DOOR DEVICE	2
HOW DO I REMOVE A GARAGE DOOR?	5
WHAT CAN I DO WITH CHAMBERLAIN?	6

PREREQUISITES

Verify the following before beginning the integration.

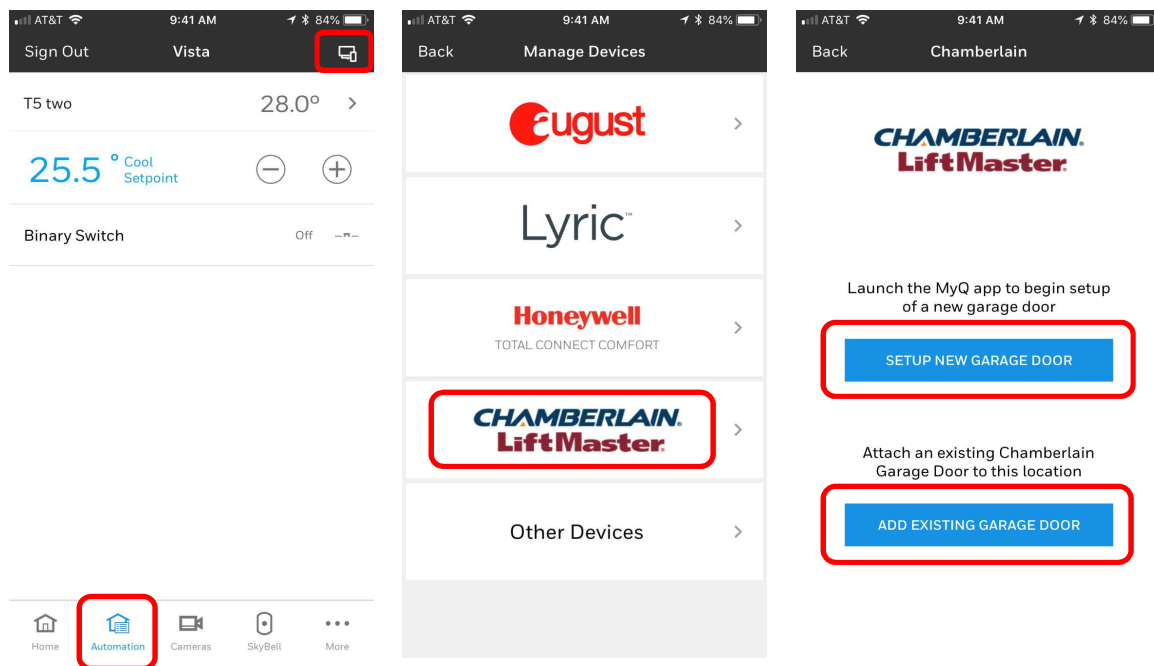
1. MyQ App installed on an iOS or Android device.
2. Existing Total Connect 2.0 Remote Service account with automation enabled.
3. Any previously setup MyQ device currently in the MyQ App or a new MyQ compatible device ready to be setup in MyQ Environment.
4. Total Connect 2.0 Application in your platform of choice. (Website, iOS, or Android)

SETUP NEW OR EXISTING GARAGE DOOR DEVICE

To begin, you must first login to the Total Connect 2.0 Application and go to the “Automation” Tab.

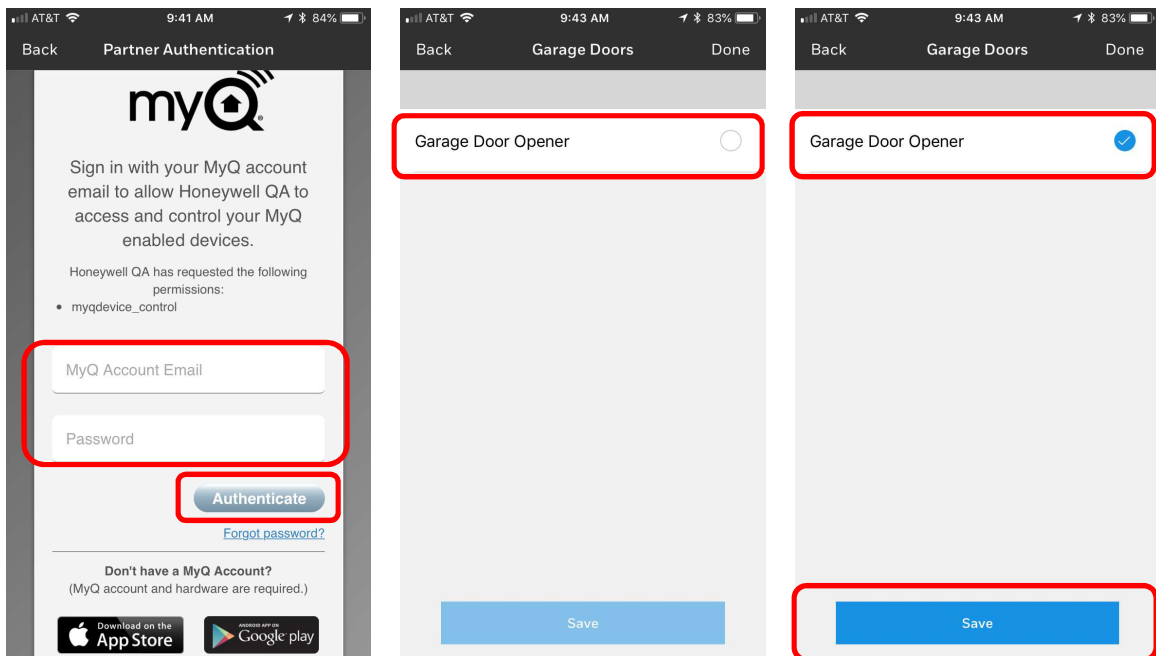
NOTE: Screenshots are from the iOS App but the steps performed are very similar across all platforms.

1. On the “Automation” Tab, click the “Manage Devices” Tab at the top right, once within that page select “Chamberlain/LiftMaster,” and select the method for integrating with Total Connect 2.0. This selection depends on if you have a new device not yet setup in MyQ App or an existing device currently setup in the MyQ App. Only the mobile apps provide the option to setup new.

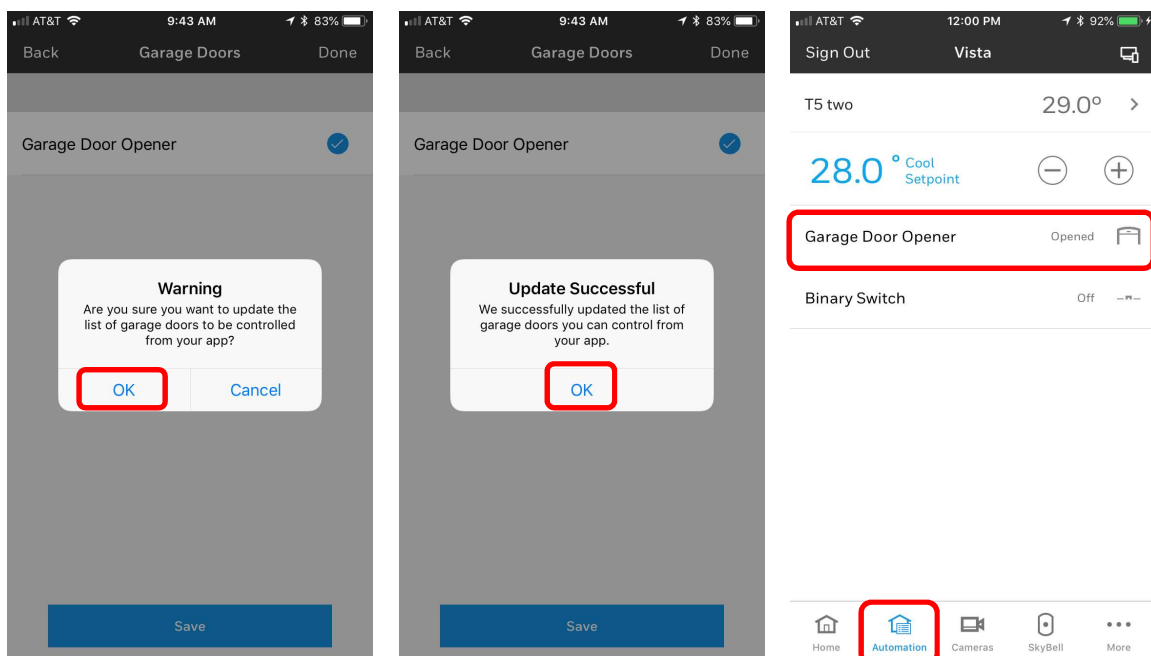


2. If Selecting “Setup New Garage Door” from the mobile apps, it will take you to your MyQ App to complete the initial setup in that environment first. If you do not already have the app, it will take you to your app store to download it.

3. If you select “Add Existing Garage Door” from mobile apps or “Sign Into Chamberlain” from the website, it will then take you to the login screen where you must enter your valid “MyQ” email and password then select “Authenticate.” This will verify your credentials and display all previously setup garage doors. Next select any and all garage doors you desire to control from the TC2 App and click “Save.”



- Next you will get a warning to confirm that you want to add the selected garage doors into the TC2 App. Click “OK” to continue or “Cancel” to make changes. Once confirmed you will receive confirmation that the list of garage doors have been updated.

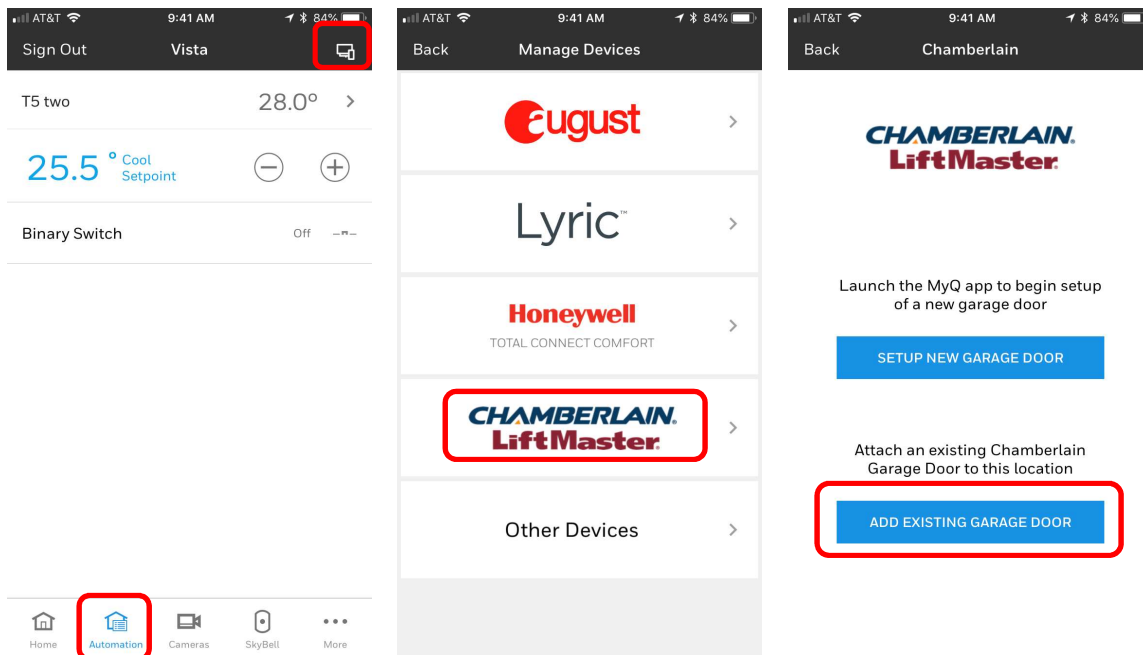


- You will now be able to see all added garage doors in your “Automation” tab.

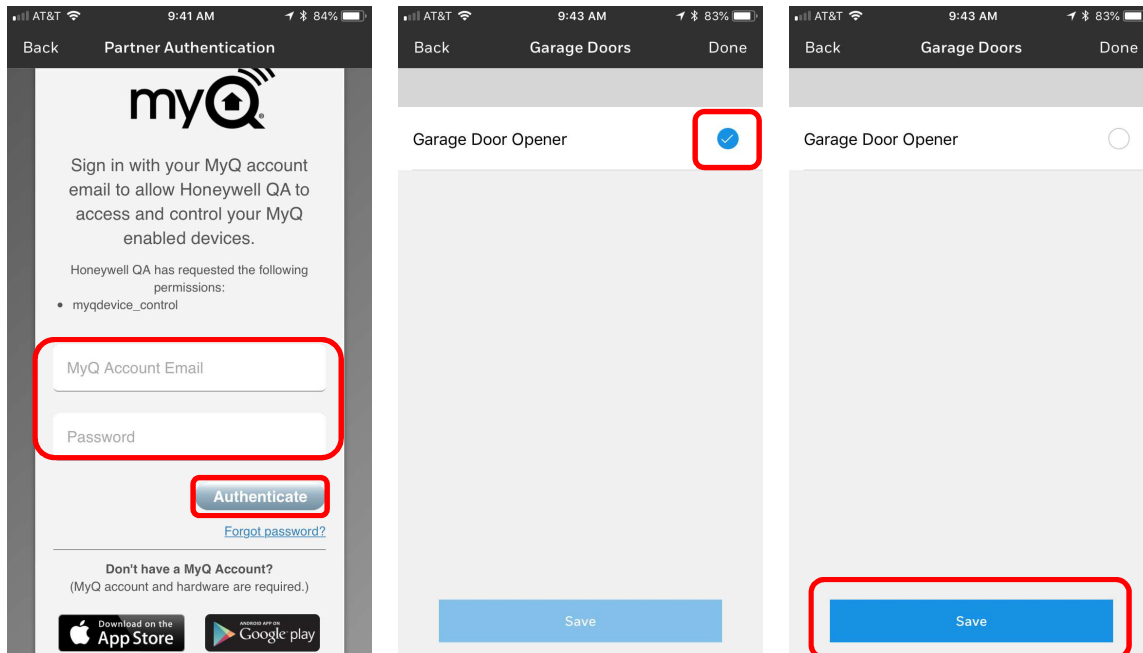
HOW DO I REMOVE A GARAGE DOOR?

Once the initial setup is done, changes can still be made at a later time.

1. To remove previously enabled garage door(s), go to your “Automation” Tab and select “Manage Devices.” Next select “Chamberlain/LiftMaster,” then select “Add Existing Garage Door” in the mobile apps or “Sign Into Chamberlain,” from the website.



2. Enter your MyQ Credentials, select “Authenticate,” then uncheck the desired garage door(s) and click “Save.”



WHAT CAN I DO WITH CHAMBERLAIN?

Integrating your Chamberlain/LiftMaster Garage door device into Total Connect 2.0 will allow you to Open, Close, and see the status of your garage door from anywhere.

This is all accomplished in the same Total Connect 2.0 App as your other Honeywell security and automation devices. This integration and control of your existing Chamberlain/LiftMaster devices can be performed in any of the following platforms:

- TC2 Website – www.totalconnect2.com
- TC2 iOS App at the latest version - [Download iOS App Here](#)
- TC2 Android App at the latest version - [Download Android App Here](#)

NOTE: Mobile Apps provide the ability to setup new MyQ devices.