

2. Communications Setup

2.1 Setting up Downloader Communications

To set up communication with different protocols, you must set up a modem for each protocol in the Communication Setup screen.

The list of modems supported in Compass 2.0 for each protocol can be viewed in the Standard Modems pane of the **Communication Settings** dialog box.

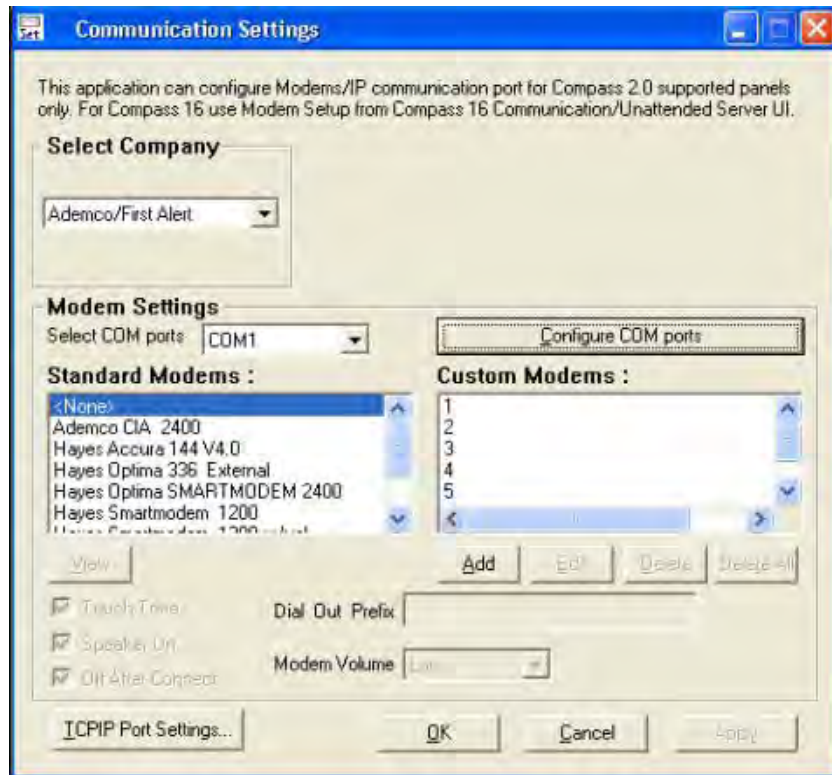



Figure 3-1 Communication Settings



2.2 Setting up the Modem

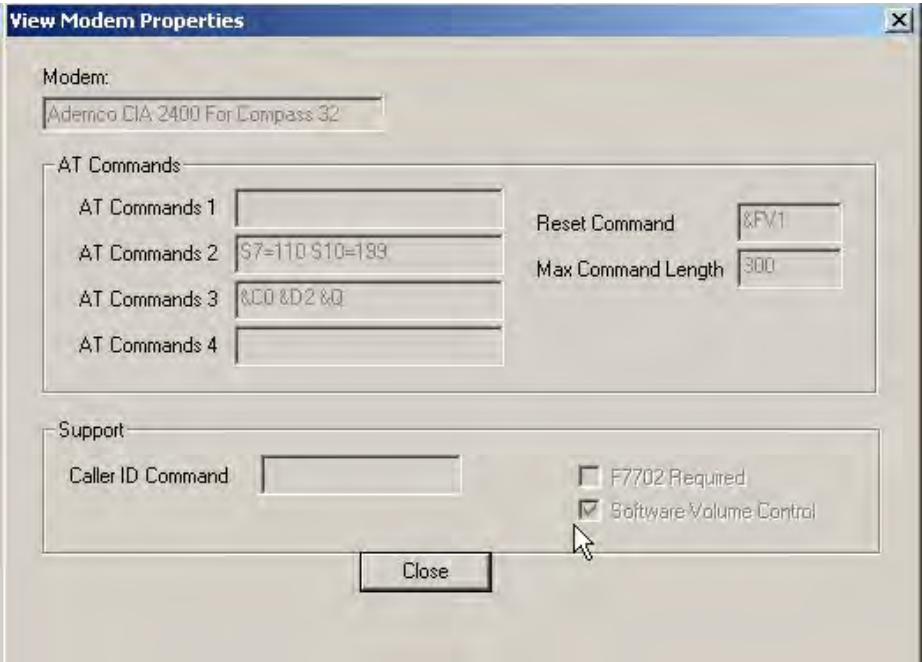


To set up the modem, click  on the Compass Shell toolbar or click **File> Communication Setup** in the **Compass Communications** screen.

The **Communication Settings** (Figure 3-1) dialog box is displayed.

The modem is set up as follows:

Parameter	Description
Select Company	<p>From the list of companies, select the name of the company whose panel you are using. If FBII is selected, the Interface needs to be configured accordingly.</p> <p> REFERENCE– INTERNAL: For more information on configuring FBII refer to FBII F7702 Interface.</p>
Modem Settings	
Select COM Ports	<p>Select the option, ‘ List all COM Ports including virtual ports’, to view all the virtual comports along with the physical comports available in the system.</p> <p>The available COM ports will be displayed in the drop down “Select COM Port for Compass”</p> <p></p> <p>Click Add or Delete in the displayed window to add or delete COM ports. The selected port is used for Compass communications.</p>
Standard Modems	<p>Based on the protocol selected, the corresponding standard modems are displayed. To view details of the modem, select the modem and click View.</p> <p>The View Modem Properties Dialog box is displayed.</p>



Custom Modem	To add a new modem that is not in the list, click Add . The Add/Edit Modem screen is displayed. Configure it as detailed in the section Adding Modems .
Dial Out Prefix	It is a unique number used for identifying the panel from which the call comes.
Touch Tone	Select this, if you prefer touch tone dialing. The default type is Rotary, or pulse dialing.
Speaker On	Select this, if you want the speaker on.
Off After Connect	Select this, to turn off speaker after connecting.
Modem Volume	Set modem volume. Select High, Medium, or Low, from the drop-down list.
TCP/IP Port Settings	Click to configure TCP/IP port. The configure TCP/IP port dialog is displayed.

**TCP IP Port**

Select the TCP IP Ports. To add more ports, click **Add**. To remove ports, click **Delete**.

Internet/Intranet Controller

Type the **IP Address** of the Control Server of the customer location.

While communicating over the Internet through Alarmnet, enter the **AlarmNet-i Website** address/URL where the Control Server is running, as shown in the display (this is set to a default value of "controlserver.alarmnet.com".)

Click **OK**.

Click **Apply**, to apply the above settings to the modem.

FBII F7702 Interface

F7702 is a modem interface for use with Compass 2.0. This allows a wider range of modems to be used and provides a local mode of operation.

You can connect with the panel remotely or locally depending on the modem configurations in the Shell.

The modem configuration screen allows you to type the value for a Remote Code Suffix and a Local Code Suffix. In most cases, the default values of **1 for the remote and **0 for the local is used. These options exist to accommodate situations where the phone company or your PBX uses **0 or **1.

If the company selected in **Communication Settings** is FBII, the FBII F7702 Interface must be configured as:

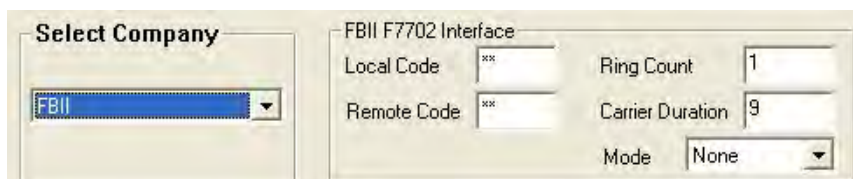


Figure 3-2 FBII F7702 Interface